



# BALCON BWT SYSTEM EX

DAMEN 'BALCON 1000', outfitted with PureBallast Alfa Laval, designed for wave impact

## GENERAL

Basic functions  
Description

Ballast Water Treatment  
The container is a fully automatic treatment system with a type approved Alfa Laval PureBallast system. This solution is plug & play and suitable for on-board Ballast Water Treatment  
PureBallast 3.1 1000 EX  
Filtration & Medium Pressure High Intensity UV  
CIP module  
Automatic backwash system  
400/440 V, 113 kW, 50/60 Hz

BWT System  
Treated rated capacity  
Technology

Cleaning system UV  
Cleaning system filter  
Power consumption

## POSITION ON THE VESSEL

Hazardous area  
Location  
Mounting on deck

Can be placed in hazardous area 1  
Up to and including upperdeck of Aframax class vessels  
Avoiding bow impact area  
By means of welding

## DIMENSIONS

Deckhouse  
Gross weight  
Wall thickness  
Top and bottom of  
Corrosion protection  
Color  
Lifting

(LxWxH) 5767 x 2305 x 2565  
± dry 12.400 kg ± wet 14.410 kg  
8 mm thick steel  
5 mm thick steel  
IP Intershield 3 layers  
Pure white RAL 9010  
At top lifting eyes

## SHIP CONNECTIONS

Power connection  
Ballast connection  
Backflush  
Flushing, Fresh Water  
Colling water  
Drain reactor  
Drain CIP fluid  
Cable penetration  
Air connection  
Flanges

Roxtec cable entry  
Inlet/ outlet DN 350  
DN 150  
DN 32  
DN 50  
DN 32  
DN 32  
RGS-4  
DN 25  
DIN EN 1092-1

## COMPONENTS

Valves, operation  
Filter  
UV reactor  
Power cabinet  
Control cabinet  
Regulating valve  
Flowmeter  
Booster pump  
Fan  
Heater  
HVAC power cabinet  
Piping  
Insulation  
Interior lighting  
Door  
Ladder  
Bilge  
Detection system

Electropneumatic EX  
Self-cleaning filter EX  
UV reactor EX  
Power cabinet (placed in safe area)  
CC with touch screen (placed in safe area)  
1x regulating valve EX  
Magnetic type EX  
1.000m<sup>3</sup>/h EX  
Fan 4.000m<sup>3</sup>/h EX  
Heater 3x1000 W 230V 60HZ EX  
Power cabinet (placed in safe area)  
Steel galvanized  
Minimum 50 mm  
4 lamps (1 lamp with emergency supply) EX  
One weathertight entrance door  
2 ladders  
Aft and front side provided with a 1" plug  
Prepared placement and connection points for general vessel alarm beacon, heat and smoke detectors and vessel fire detection system

## AMBIENT CONDITIONS

Sea water temperature  
Ambient temperature

Max. 35°C  
Max. 45°C  
Min. -5°C optional -20 °C

## APPROVALS AND CERTIFICATES

Alfa Laval PureBallast  
Classification societies

The PureBallast system is IMO and USCG type approved  
Deckhouse is designed for all Major class societies

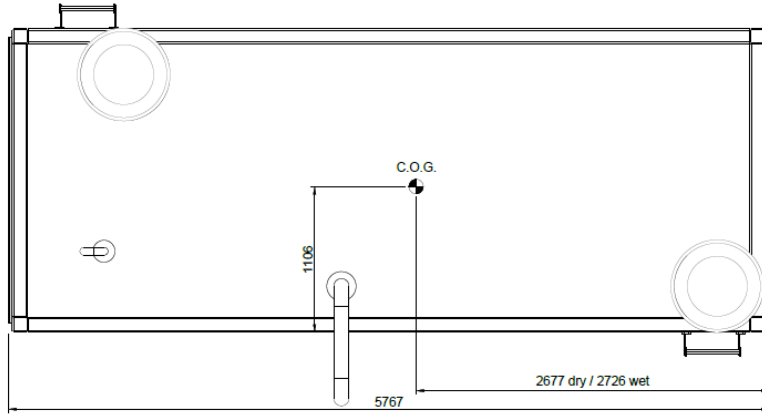
## EX

EX Rating

All components, wiring, inside the deck house are classified for use in hazardous areas in accordance to the IEC 60079 series of standards: Zone 1, explosion group IIB and temperature class T4 (135°C)

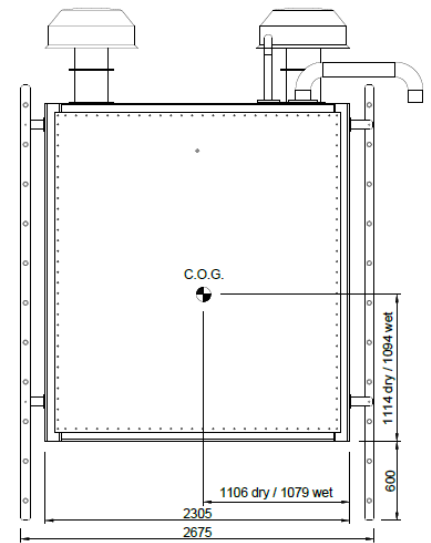
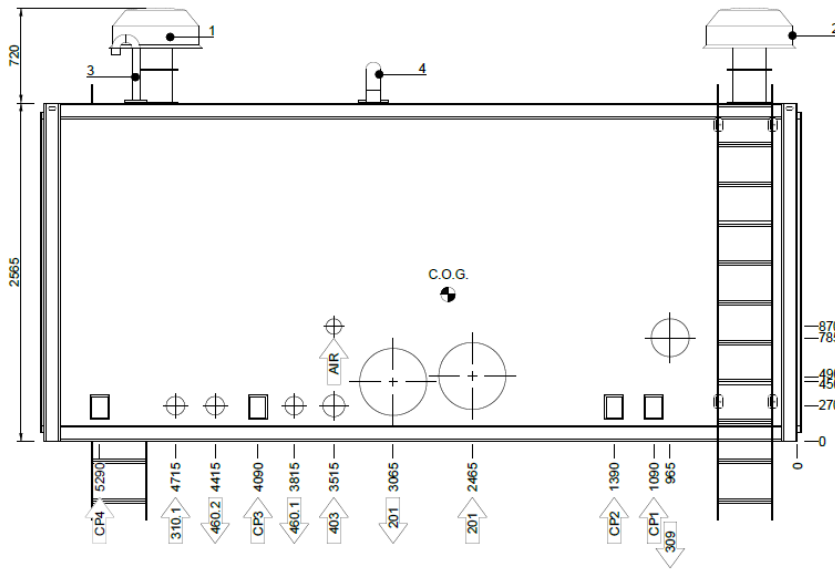
# BALCON BWT SYSTEM EX

DAMEN 'BALCON 1000', outfitted with PureBallast Alfa Laval, designed for wave impact



## Legend

201	Ballast water, inlet/outlet	DN350, PN10
309	Backflush water/overboard	DN150, PN10
310.1	Flushing miscellaneous, F.W.	DN32, PN10
403	Cooling water, UV reactor	DN50, PN10
460.1	Drain, reactor, S.W., F.W.	DN32, PN10
460.2	Drain, CIP-fluid	DN32, PN10
CP	Cable penetration	RGS-4
AIR	Air connection	DN25, PN10



# DAMEN

DAMEN GREEN SOLUTIONS

Member of the DAMEN SHIPYARDS GROUP

Avelingen-West 20  
4202 MS Gorinchem  
The Netherlands

P.O. Box 1  
4200 AA Gorinchem  
The Netherlands

phone +31 (0)183 63 91 63  
fax +31 (0)183 63 21 89

green@damen.com  
[www.damengreen.com](http://www.damengreen.com)

© No part of the leaflet may be reproduced in any form, by print, photo print, microfilm, or any other means, without written permission from Damen Shipyards Group