

# BALCON BWT SYSTEM EX

DAMEN 'BALCON 1500 or 2000', outfitted with PureBallast Alfa Laval, designed for wave impact

## GENERAL

Basic functions	Ballast Water Treatment
Description	The container is a fully automatic treatment system with a type approved Alfa Laval PureBallast system. This solution is plug & play and suitable for on-board Ballast Water Treatment
BWT System	PureBallast 3.1 1500 or 2000 EX
Treated rated capacity	1500 m <sup>3</sup> /h or 2000 m <sup>3</sup> /h or
Technology	Filtration & Medium Pressure High Intensity UV
Cleaning system UV	CIP module
Cleaning system filter	Automatic backwash system
Power consumption	400/440 V, 113 kW, 50/60 Hz

## POSITION ON THE VESSEL

Hazardous area	Can be placed in hazardous area 1
Location	Up to and including upperdeck of Aframax class vessels Avoiding bow impact area
Mounting on deck	By means of welding

## DIMENSIONS

Deckhouse	(LxWxH) 9150 x 2370 x 2800
Gross weight	± dry 21.600 kg ± wet 25.250 kg
Wall thickness	8 mm thick steel
Top and bottom of	5 mm thick steel
Corrosion protection	IP Intershield 3 layers
Color	Pure white RAL 9010
Lifting	At top lifting eyes

## SHIP CONNECTIONS

Power connection	Roxtec cable entry
Ballast connection	Inlet/ outlet DN 400
Backflush	DN150
Flushing, Fresh Water	DN 32
Colling water	DN 80
Drain reactor	DN 50
Drain CIP fluid	DN 32
Cable penetration	RGS-4, RGS-6
Air connection	DN 40
Flanges	DIN EN 1092-1

## COMPONENTS

Valves, operation	Electropneumatic EX
Filter	Self-cleaning filter EX
UV reactor	<b>2x UV reactor EX</b>
Power cabinet	Power cabinet (placed in safe area)
Control cabinet	CC with touch screen (placed in safe area)
Regulating valve	1x regulating valve EX
Flowmeter	Magnetic type EX
Booster pump	1.500m <sup>3</sup> /h EX or 2.000m <sup>3</sup> /h EX
Fan	Fan 4.000m <sup>3</sup> /h EX
Heater	Heater 6x1000 W 230V 60HZ EX
HVAC power cabinet	Power cabinet (placed in safe area)
Piping	Steel galvanized
Insulation	Minimum 50 mm
<b>Interior lighting</b>	<b>6 lamps (1 lamp with emergency supply) EX</b>
Door	One weathertight entrance door
Ladder	2 ladders
Bilge	Aft and front side provided with a 1" plug
Detection system	Prepared placement and connection points for general vessel alarm beacon, heat and smoke detectors and vessel fire detection system

## AMBIENT CONDITIONS

Sea water temperature	Max. 35°C
Ambient temperature	Max. 45°C
	Min. -5°C optional -20 °C

## APPROVALS AND CERTIFICATES

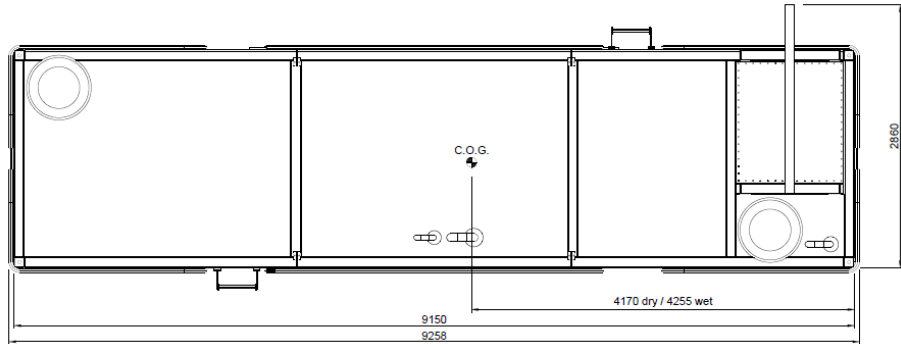
Alfa Laval PureBallast	The PureBallast system is IMO and USCG type approved
Classification societies	Deckhouse is designed for all Major class societies

## EX

EX Rating	All components, wiring, inside the deck house are classified for use in hazardous areas in accordance to the IEC 60079 series of standards: Zone 1, explosion group IIB and temperature class T4 (135°C)
-----------	--

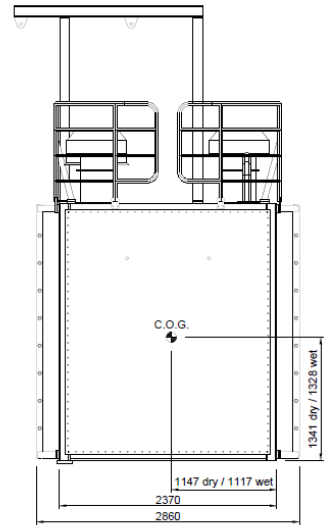
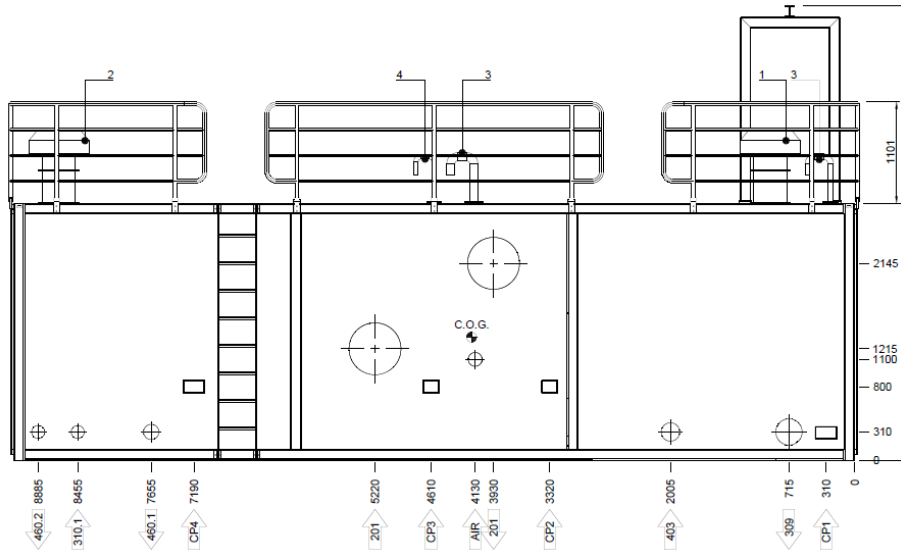
# BALCON BWT SYSTEM EX

DAMEN 'BALCON 1500 or 2000', outfitted with PureBallast Alfa Laval, designed for wave impact



## Legend

201	Ballast water, inlet/outlet	DN400, PN10
309	Backflush water/overboard	DN150, PN10
310.1	Flushing miscellaneous, F.W.	DN32, PN10
403	Cooling water, UV reactor	DN80, PN10
460.1	Drain, reactor, S.W., F.W.	DN50, PN10
460.2	Drain, CIP-fluid	DN32, PN10
CP	Cable penetration	RCS-4, RCS-6
Air	Air connection	DN40, PN10



# DAMEN

DAMEN GREEN SOLUTIONS

Member of the DAMEN SHIPYARDS GROUP

Avelingen-West 20  
4202 MS Gorinchem  
The Netherlands

P.O. Box 1  
4200 AA Gorinchem  
The Netherlands

phone +31 (0)183 63 91 63  
fax +31 (0)183 63 21 89

green@damen.com  
[www.damengreen.com](http://www.damengreen.com)

© No part of the leaflet may be reproduced in any form, by print, photo print, microfilm, or any other means, without written permission from Damen Shipyards Group