



## BALCON DESIGNED FOR WAVE IMPACT

DECKHOUSE FOR BALLAST WATER MANAGEMENT SYSTEMS

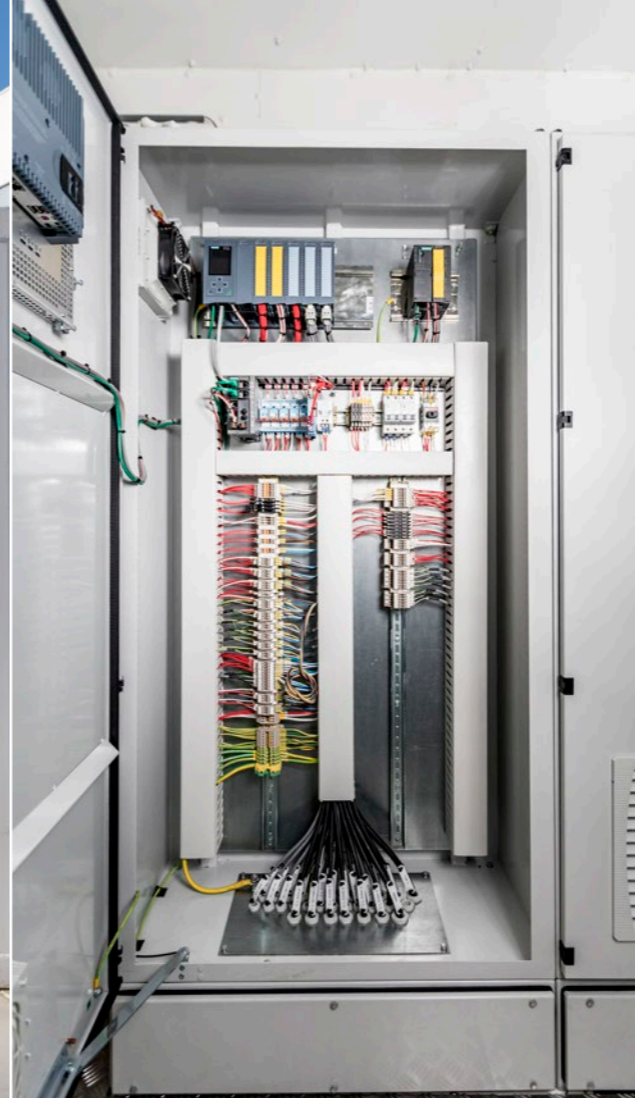
BalCon may be fitted with an array of ballast water management systems (BWMS), to suit every requirement. Whether it's large flow capacity, US Coast Guard approval, Ex-rating, or all three you need, BalCon has you covered.



#### COOPERATION BWMS SUPPLIERS

Damen has applied its shipbuilding expertise to the development of a compact deckhouse with a BWMS installed. Close cooperation with many BWMS suppliers has resulted in one fully integrated solution suitable for every situation.

We believe that to offer a competitive product, strong cooperation with BWMS suppliers is important. Damen is continuously looking to expand its network with BWMS suppliers to make BalCon even more flexible.



**DAMEN** evoQUA  
WATER TECHNOLOGIES  
**Ballast Water Management System**

**BalCon EC 1500**  
powered by **SeaCURE**

#### CONSTRUCTION

- Side, front and aft of deckhouse 8 mm thick coated steel
- Top and bottom of deckhouse 5 mm thick coated steel

- Deckhouse is fully insulated (50 mm) and heated
- All equipment is installed via a bolted hatch
- All piping for connecting the BWMS is included

#### PLUG AND PLAY

BalCon is an ideal 'plug and play' solution, with the absolute minimum of installation downtime for the vessel. It can also be used as a temporary system on barges/pontoons, or for example on vessels that are nearing the end of their life and need only to bridge a short period before being taken out of service and scrapped.



#### EXPLOSION PROOF

BalCon is also well-suited to tanker vessels (with submersible ballast pumps), where the deckhouse is installed on the weather deck. As an option, BalCon can be delivered as an explosion proof version.

## HIGHLY MOBILE AND VERSATILE, TOO.



#### EASY TRANSPORTATION

Fitting BalCon in a standard container means transport couldn't be easier. From your doorstep to your vessel in the smallest possible timeframe and at the lowest cost.

#### FITTING

The BalCon is a fully integrated, deckhouse ballast water management retrofitting solution. BalCon covers a wide range of capacity requirements, from 1,000m<sup>3</sup> up to 3,000 m<sup>3</sup> per hour. BalCon is designed to use a minimum of space, with all equipment being contained in a single deckhouse. BalCon may use Type Approved UV or Electrochlorination technology to meet all required rules and regulations.





#### BALCON ADVANTAGES

- Class approved deckhouse
- Easy transport
- High quality equipment installed
- Simplified EX design
- Low weight, compact design
- Easy installation of equipment and piping

#### CLASS

##### Standard

- The Deckhouse is designed for placement on open deck
- Designed according to the rules of the major classification societies
- Designed for wave impact

Restricted to placement aft of the forward perpendicular, avoiding the bow area. When placed on a vessel exceeding the Aframax Class, the distance forward of the aft perpendicular is to be decreased in order to meet class approval.

Special deckhouses are designed on client request.



#### SIMPLIFIED EX DESIGN

Electrical: All components and wiring inside the deckhouse are classified for use in hazardous areas : Zone 1, explosion group IIC and temperature class T4 (135°).

HVAC Ventilation suitable for 20 air changes per hour.



DAMEN GREEN SOLUTIONS

Member of DAMEN SHIPYARDS GROUP



Avelingen-West 20  
4202 MS Gorinchem

P.O. Box 1  
4200 AA Gorinchem  
The Netherlands

phone +31 (0)183 63 91 36  
fax +31 (0)183 63 21 89

green@damen.com  
damen.com